

# ENVIRONMENTAL REPORT 2026



DUNLOP SRIXON SPORTS MANUFACTURING  
(THAILAND) CO., LTD.



+66 37 204868

[www.dunlop-srixon.co.th](http://www.dunlop-srixon.co.th)



# Table of Contents

Company Introduction	1
Environmental Message from Top Management	2
Company Policy	8
Quality, Environmental, Occupational Health and Safety Policy	9
Energy consumption in 2025 compared to 2024	10
Guidelines for reducing the Electrical Energy consumption	11
Guidelines for reducing the Thermal Energy consumption	13
Waste Reduction Project	14
Air Quality and Wastewater Monitoring and Inspection Activities 2025	15
Environmental and Energy Performance in 2025	16
Environmental and Safety Activities	17
Corporate Social Responsibility (CSR)	19
Energy conservation from DSSMT employees' perspectives	20



# ENVIRONMENTAL MESSAGE



**Satoshi Tanaka**  
**MANAGING DIRECTOR**

In recent years, environmental challenges, such as global warming and the increasing frequency of extreme weather events, have become more urgent than ever before. In these rapidly changing times, we fully recognize the immense social responsibility we bear as a manufacturing company. We place the highest priority on reducing environmental impact across our entire supply chain, from product development and procurement to manufacturing and disposal. This fiscal year, we accelerated the adoption of renewable energy at our factories and achieved meaningful progress in reducing CO2 emissions. Furthermore, we have strengthened our initiatives toward a circular economy by re-evaluating product design from the very early stages to enhance recyclability. To pass down a rich and vibrant Earth to the next generation, we will continue to balance environmental sustainability with business growth. We are committed to contributing to a sustainable society through technological innovation. We look forward to your continued guidance and support.

The world has entered an era where climate change and resource constraints can no longer be ignored.

Today, companies are judged not only by what they make, but by how they make it. We manufacture tennis balls used by players around the world. We believe that every ball should be made without placing an unnecessary burden on the planet.

Materials, energy, manufacturing processes—we challenge and refine every element to minimize environmental impact. This is not an aspiration; it is our responsibility.

As a company operating in Thailand, we are committed to growing together with local communities and building a sustainable future—so that future generations can continue to enjoy sport on a healthy planet.



**Hiroyuki Kume**  
**TECHNICAL ADVISOR**

# ENVIRONMENTAL MESSAGE

Hello dear colleagues,

This year, environmental issues continue to be a significant global challenge, particularly climate change, which has led to rising temperatures, droughts, floods, and increasingly severe natural disasters. Worldwide, there is a strong emphasis on reducing greenhouse gas emissions, lowering carbon output, improving energy efficiency, minimizing waste, promoting recycling, and using resources more efficiently.

For all of us, caring for the environment can begin with simple actions in our daily lives. Even small changes, when collectively adopted, can lead to meaningful and impactful results.

Therefore, we kindly invite all employees to contribute by:

- Turning off lights, air conditioning, and electrical equipment when not in use
- Separating waste appropriately to improve recycling efficiency
- Reducing the use of single-use plastics, such as cups, straws, and plastic bags
- Using water wisely and reporting any leaks immediately
- Minimizing food waste and using resources responsibly

Sustainability is not the responsibility of any one individual, but a shared responsibility for all of us.



**Porntip Siriban**  
**GENERAL MANAGER**

The natural environment, when clean and well-maintained, is essential for all living beings on this planet. Therefore, it must always be taken into consideration in every activity undertaken. Waste and garbage must not be disposed of into water sources or onto land. Deforestation should be avoided, and materials that cause air pollution and particulate matter should not be burned. Natural resources should be used efficiently and responsibly.

In addition to conserving and using natural resources wisely, efforts must also be made to restore and replenish them. This can be achieved through actions such as tree planting and the adoption of clean energy, among others, to ensure that a healthy and clean environment is preserved for the long term.



**Don Prapepek**  
**GENERAL MANAGER**

# ENVIRONMENTAL MESSAGE



**Kruawan Kallayasiri**  
PE&QA and R&D Senior Manager

As individuals responsible for product development, we must carefully consider and take into account the sources of raw materials, as well as the product's end-of-life disposal and degradability, to determine whether it contributes to environmental issues. Efforts should also be made to extend product lifespan in order to reduce the consumption of various resources. Through these initiatives, we aim to help minimize environmental pollution, even to a modest extent.

The efficient and prudent use of energy and raw materials is essential in reducing waste generation and environmental pollution. Preventive measures through proper control and awareness are of greater importance, ensuring that waste and pollution do not harm the environment.



**Surin Meekham**  
Engineering Senior Manager

# ENVIRONMENTAL MESSAGE



**Supattra Kaewsombat**  
Production Senior Manager

The climate changing effected to all region.  
Save the world for safe ourselves.

The Company operates in accordance with its Zero Landfill policy, aiming to minimize waste sent to landfills through the use of waste as alternative fuel, recycling, and reuse. This approach maximizes resource efficiency, reduces environmental impact, and supports sustainable growth.

The Company hereby encourages all employees to participate in proper waste segregation and to use resources responsibly, in order to collectively foster an environmentally and socially responsible organization.



**Panthita Pimmadakul**  
SE and HR/Admin Manager

# ENVIRONMENTAL MESSAGE



**Wittawet Promton**  
PC & Logistics Manager

Environmental conservation is not the responsibility of any single individual; rather, it represents the shared survival of humanity. It is a collective duty that requires immediate action from all of us to ensure that our planet remains livable.

When we adjust our way of life to be more aligned with and respectful of nature, the Earth will, in return, continue to sustain us by providing clean and abundant resources. Let us begin working together today, as every small action you take contributes to sustaining the life of our planet and safeguarding the future of generations to come.

Environmental management is a shared responsibility of everyone within the organization. All individuals must demonstrate awareness and a strong commitment to using resources efficiently, minimizing environmental impacts, and consistently adhering to established guidelines.

This includes the appropriate use of energy and materials, as well as performing work in accordance with procedures that take environmental considerations into account. "The cooperation and discipline of all employees are key factors in driving the organization toward stable and sustainable operations."



**Chonticha Ingpet**  
Accounting Manager

# ENVIRONMENTAL MESSAGE



Ratchanida Khumpanyo  
PE&QA Manager

At present, the environment is deteriorating at an increasingly alarming rate. It cannot be denied that this situation is largely caused by human activities. Therefore, we encourage everyone to recognize the seriousness of this issue and work together to reduce or refrain from activities that harm or degrade the environment, whether in the workplace or in daily life. Prevention is always more effective than attempting to resolve problems after they have already occurred.

Energy conservation is the efficient and economical production and use of energy. Besides reducing energy consumption and saving costs for businesses. Energy conservation also helps reduce environmental problems caused by energy sources and production.



Winyoo Kenanan  
Engineering Manager

# COMPANY POLICY

1. Provide high quality to our customers! = "Quality" Is our brand

- High quality in consideration of the environment.
- Achieve High Quality and Low Cost in all aspects of 4M x SQCD
- The basis of factory activities is "5S".

2. Global Player

- Become a Top Runner of Quality in the Tennis Balls Manufacturing Industry.
- Always act with an awareness of the market.

3. Improve the level of our human resources. Sum of individual growth = factory growth

- Set KPI, check progress and correct course (PDCA) autonomously.
- Trust and certainty - Re-embrace Compliance, Internet Control and Environmental Response.

Mr. Satoshi Tanaka  
Managing Director

## **SAFETY AND OCCUPATIONAL HEALTH, ENVIRONMENT, QUALITY POLICIES**

Dunlop Srixon Sports Manufacturing (Thailand) Co.,Ltd. As manufacturer of high quality and excellent service Tennis Balls incorporates important the risks, both internal and external. Related to quality, service, environment, occupational, health, safety and working conditions of our workers to attain high level of customer's satisfaction and working standards of our company.

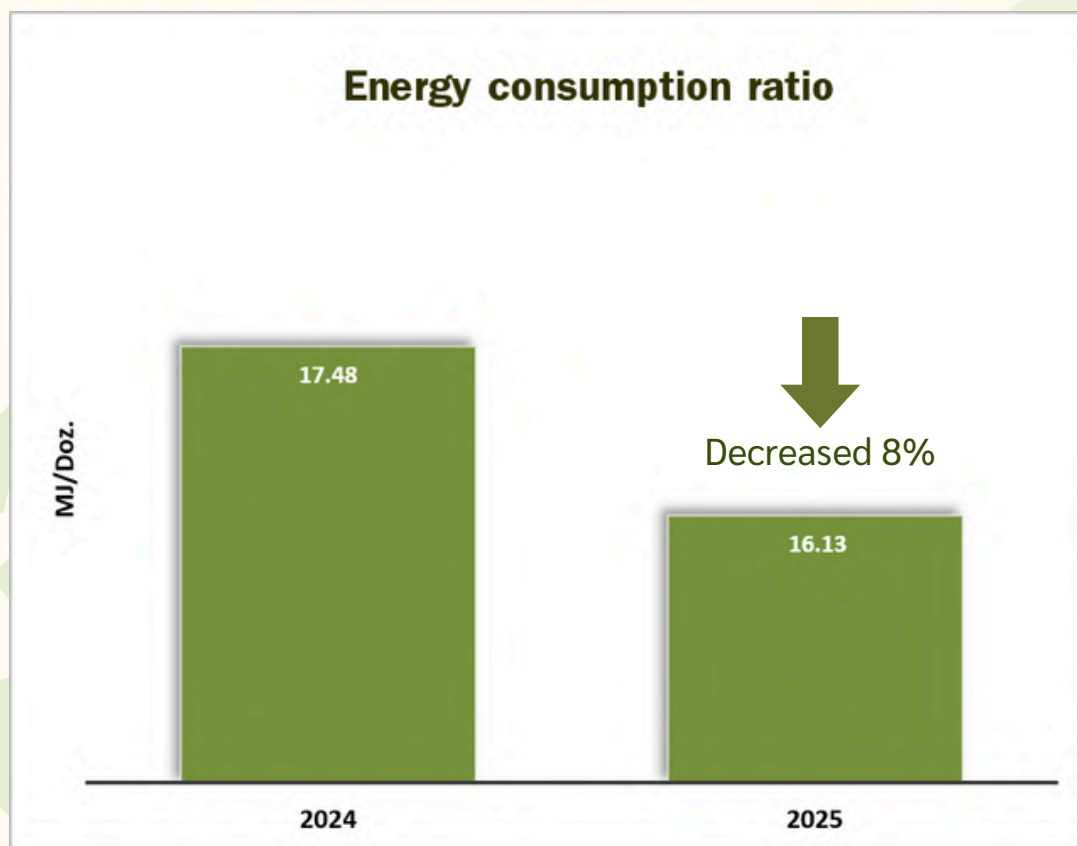
In serve these objectives, our company has undertaken to implement the following :

- 1.Timely Delivery to meet customer's satisfaction.
- 2.Reduction and prevention of possible risks of accidents upcoming with employee, contractor, sub-contractor, visitor and company.
- 3.Abide strictly to rules and regulations relating to environment, occupational health and safety issues.
- 4.Commitment to the identification and evaluation of environment aspect and impact still focuses on activities, production process, product and company service related environment. And resources can be used to achieve maximum benefit. To continuously improve operations even further.
- 5.Commitment to the safety and Occupational activities for prevention and reduce of injuries and health for all employees.
- 6.Commitment to the environment activities for protection and prevention of pollution.
- 7.Active participation and involvement with environmentalists by sharing company's environmental policies.
- 8.Commitment to build safety working place and be fit to work, to protect the injured and illness.
- 9.Commitment to suggestion to and support employees participate opinion.
- 10.Commitment to continual improvement and sustainable of the company's quality, environment, occupational, health and safety activities.

Mr. Satoshi Tanaka  
Managing Director

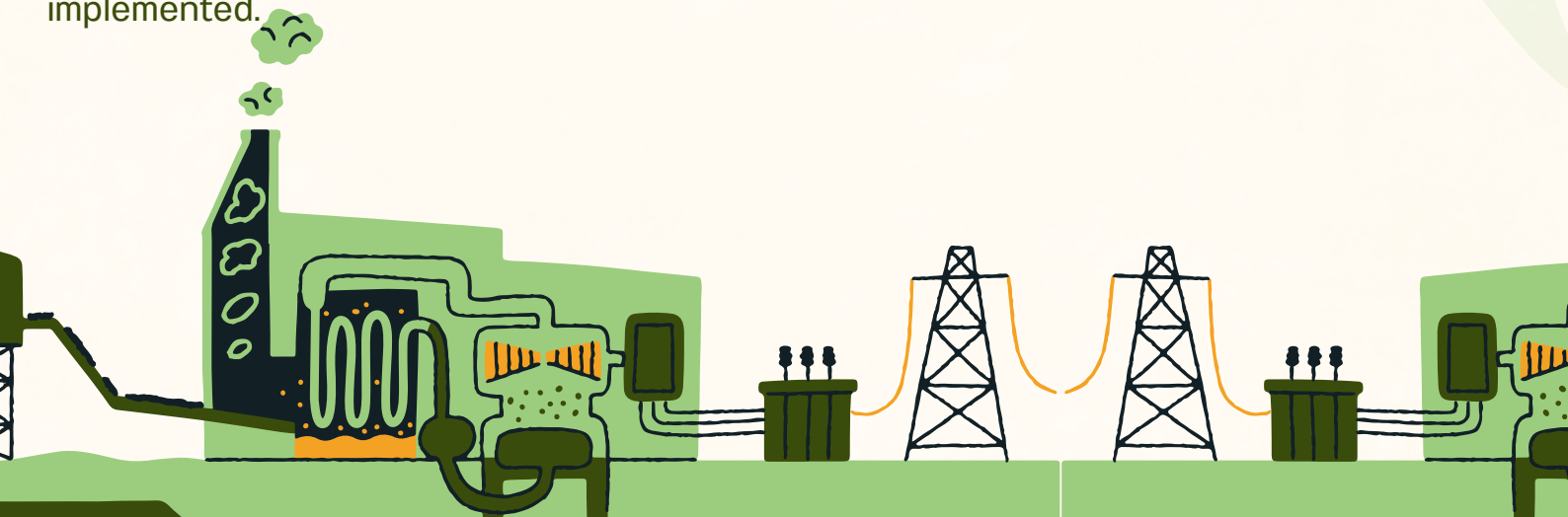
# Energy consumption in 2025 compared to 2024

In 2025, it was observed that the ratio of energy consumption per unit of production decreased compared to 2024. Energy usage declined from 17.48 MJ/Doz. to 16.13 MJ/Doz, representing an 8% reduction in energy consumption per dozen.



This achievement was made possible through the strong cooperation and commitment of both management and all employees. It reflects the implementation of various energy conservation initiatives, covering electrical energy conservation, thermal energy conservation, and environmental protection.

In 2025, there were a total of three energy conservation and environmental projects implemented.



# Guidelines for reducing the **Electrical** Energy consumption.

## 1. Control Tank Feeder Improvement Project.

Based on the concept of “enhancing energy efficiency in the production process,” the Control Tank Feeder Improvement Project has been implemented to reduce energy loss and improve the overall efficiency of the system.

### Before improvement

Analog Frequency Controller



The original control system was analog, which made it difficult to effectively regulate the flow of workpieces.

### After improvement

Digital Frequency Controller



The system was upgraded by replacing the workpiece flow control unit feeding into the machinery with a newer, higher-efficiency model.

As a result, the machinery now operates more effectively compared to the previous system, while also contributing to reduced electrical energy consumption.

As a result of implementing these energy conservation measures, the company achieved electricity savings of 5,400 kWh per year, equivalent to a 0.03% reduction. This also resulted in an estimated cost saving of approximately 22,000 Baht per year in electricity expenses.

# Guidelines for reducing the **Electrical** Energy consumption.

## 2. Project to Optimize Motor Type and Size for Suitable Application.

Based on the concept of “enhancing energy efficiency,” the type and size of the motors were adjusted to better suit their operational requirements. This improvement resulted in reduced energy losses and enhanced the overall efficiency of the system.

### Before improvement

DC Motor 71.0 kW.



The currently employed motor exhibits high electrical energy consumption and presents challenges in maintenance.

### After improvement

AC Motor 55.0 kW.



The motors were replaced with models more suitable for the application. The new motors have reduced power ratings (kW) and were changed from direct current (DC) motors to alternating current (AC) motors, while maintaining equivalent operational performance.

As a result of implementing these energy conservation measures, electricity savings of 98,000 kWh per year were achieved, equivalent to a 0.70% reduction. This also led to an estimated decrease in electricity expenses of approximately 400,000 Baht per year.

# Guidelines for reducing the **Thermal** Energy consumption.

## 3. Steam System Leak Repair Project

With the objective of reducing such losses, actions were taken to repair steam leak points and establish a maintenance plan to inspect steam traps in the main pipeline system every three months, covering a total of 10 points. This initiative helps the factory achieve fuel savings and improve overall energy efficiency.

The factory is equipped with fire-tube boilers, using Grade C fuel oil as the energy source, with one unit rated at 5 tons and another at 3 tons. A survey revealed steam leakage at various points within the system, including pipelines, valves, and equipment such as steam traps and pipe joints. These leaks resulted in thermal energy losses, increased water consumption, and elevated ambient temperatures in the affected areas.

Before improvement



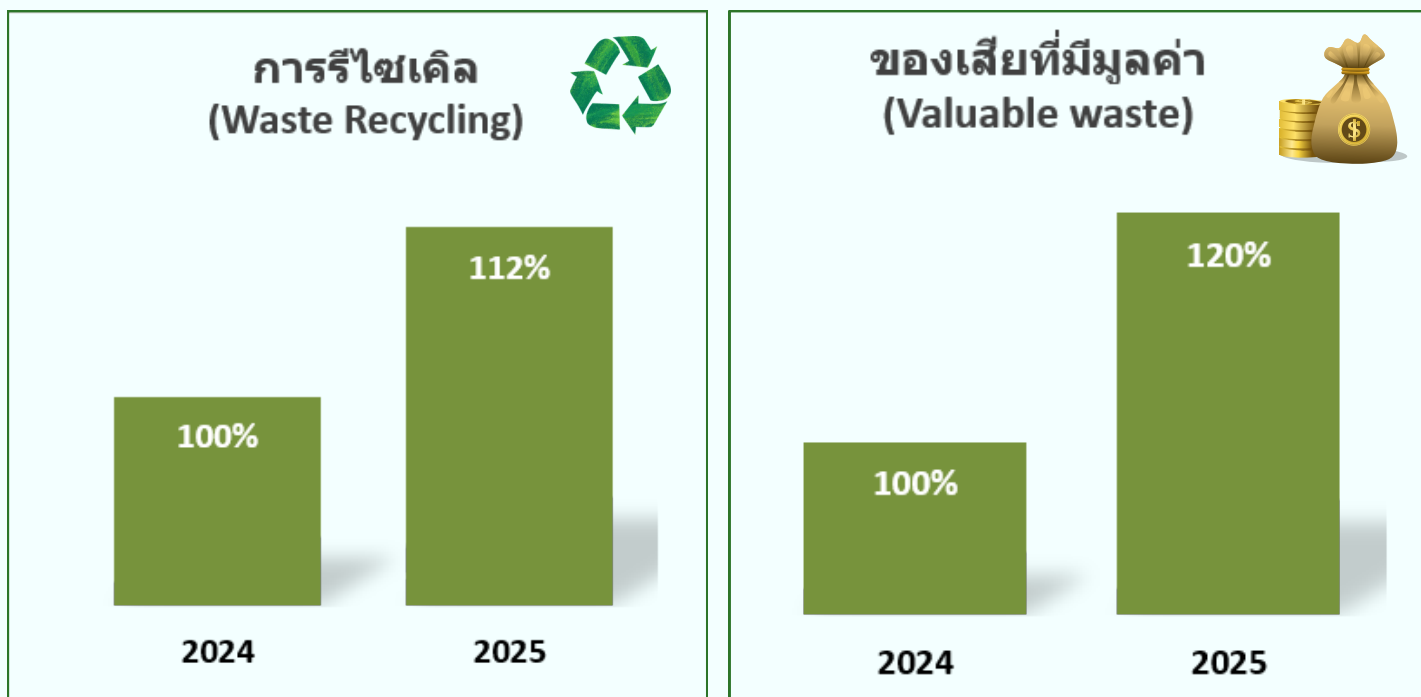
After improvement



As a result of these improvements, fuel oil consumption was reduced by 18,000 liters per year, equivalent to a 1.52% reduction. This also led to cost savings of approximately 344,000 Baht per year.

# WASTE REDUCTION PROJECT

“Through recycling and the segregation of valuable waste materials”



The graph presents a comparison between 2025 and 2024, indicating 12% increase in the recycling rate and 20% rise in the quantity of valuable waste.

The observed increases in both indicators reflect the organization's improved capacity to recover waste for reuse, as well as its enhanced efficiency in waste segregation and value creation from waste materials.



# Air Quality and Wastewater Monitoring and Inspection Activities 2025

In order to monitor the release of pollutants into the atmosphere and the discharge of wastewater into public areas, the Company has implemented control and surveillance measures through regular and consistent monitoring of air quality and wastewater quality.

The results indicate that all measured parameters are within the limits prescribed by applicable legal standards.

Type	Facility	Item	Unit	Regulation Value	2025 Results Ave.	Legislation to verify the regulation value
Emission to the atmosphere	Boiler	SOx	ppm	950	486	Notification of the Ministry of industry,B.E.2549
		NOx	ppm	200	124	
		Total Suspended Particulate	mg/m <sup>3</sup>	240	66	
Drainage	waste water	BOD	mg/L	≤500	104	Wastewater standards of factories in the Kabinburi industrial zone (Before passing into the KIZ's wastewater treatment system)
		Suspended solids	mg/L	≤200	55	
		pH	-	5.0-9.0	7.7	
		Oil content	mg/L	10	7.9	

To ensure that the emission of pollutants into the atmosphere from boiler stacks and the discharge of wastewater into the treatment pond of Kabinburi Industrial Zone do not adversely impact the environment, the Company conducts monthly wastewater monitoring, along with annual verification testing.



# Environmental and Energy Performance in 2025

Environmental performance	Unit	Year 2024 Actaul	Year 2025		% Difference 2025 Actual	
			Target	Actaul	VS Year 2024	VS Target
CO2 emission (Generation)	Kg/doz	0.83	0.82	0.76	92%	93%
Waste emission (Discharged)	g/doz	162.49	160.86	160.89	99%	100%
<b>Energy consumption</b>						
-Electric	Kwh/doz	1.50	1.45	1.42	95%	98%
-Heavy oil	ml/doz	278.64	270.28	254.38	91%	94%
-Water consumption	L/doz	4.44	4.31	4.26	96%	99%

## Environmental and Energy Management Efficiency in 2025 Compared to Production Unit.

A comparison of environmental performance between 2025 and 2024 indicates that all key indicators have shown an improving trend. CO<sub>2</sub> emissions decreased from 0.83 to 0.76 kg/doz. (an 8% reduction), electricity consumption decreased by 5%, and fuel oil usage decreased by 9%, representing the most significant improvement. Meanwhile, water consumption decreased by 4%, and waste generation showed a slight reduction of 1%.

Furthermore, when compared with the established targets, all key indicators either exceeded or met the set objectives. This reflects the continuous improvement in the effectiveness of energy and environmental management within the organization.

# Activities

## Environmental and Safety

Training on Chemical Safety Knowledge and Emergency Response Drills for Chemical Spills.



The company provides training to employees who work with chemicals to ensure they are aware of potential hazards and understand proper procedures for managing chemical spills, in order to prevent environmental contamination. This training is reviewed and conducted regularly on an annual basis.

Basic Firefighting Training and Fire Evacuation Drills.



The company conducts basic firefighting training for employees on an annual basis to ensure compliance with legal requirements. Participation in fire evacuation drills is 100% among employees during both daytime and nighttime working hours.

# Safety, Environmental, and Energy Conservation Activities

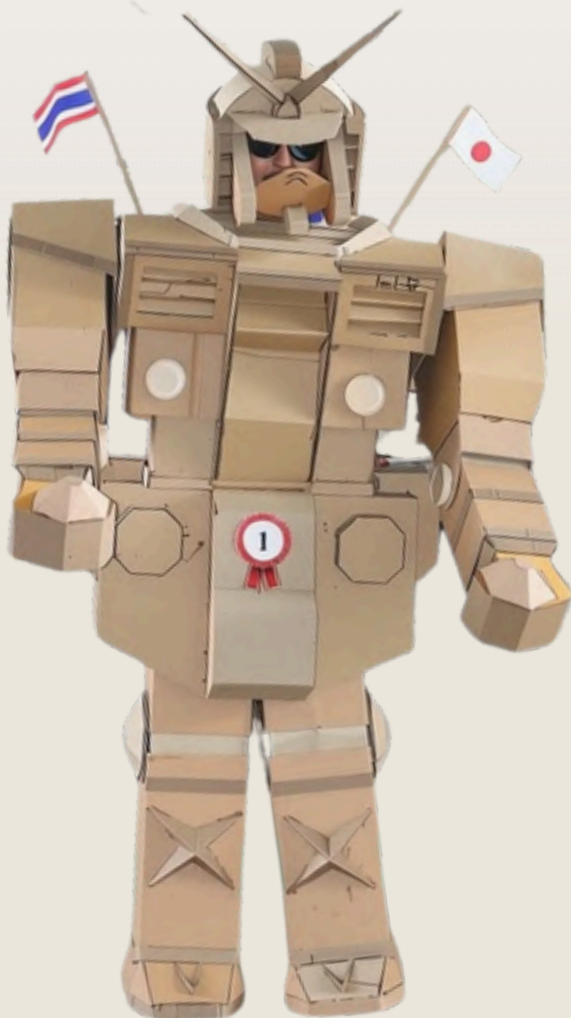
## Safety, Environmental, and Energy Conservation Week Exhibition 2025

### Event Activities

The company organized a singing contest to raise safety awareness, along with quiz games on safety, environmental protection, and energy conservation. In addition, a recycled costume contest was held, in which waste generated from the production process was creatively transformed into wearable outfits or practical items.



### Activity



# Activities

## Corporate Social Responsibility

On August 18, 2025, the company organized a Corporate Social Responsibility (CSR) activity at Ban Khok Lan School, located in Nong Ki Subdistrict, Kabin Buri District, Prachin Buri Province.



Representatives of both employees and management collaboratively carried out activities to support the school, comprising the following:

- Roof Construction
- Donation of student desk and chair sets
- Donation of new school uniforms
- Repainting of dining tables
- Provision of lunch for the students

The management and employees expressed a strong sense of pride in contributing to activities that benefit the community. This initiative brought immense happiness and smiles to both the students and the teaching staff.

### Activity Photos



## Energy conservation from DSSMT employees' perspectives



Energy conservation can be easily practiced by beginning with individual actions through behavioral adjustments in daily life. Such measures include turning off switches and unplugging electrical appliances when not in use, setting air conditioning at 25-26 degrees Celsius, and utilizing LED lighting to promote efficient energy consumption.

/Sarinthip Kreuasom PURCHASING DEPT.

Energy conservation is regarded as a shared responsibility that involves adopting changes in daily behavior. It highlights that energy saving is a practical and achievable approach, beginning with reducing, avoiding, and eliminating wasteful practices. This, in turn, contributes to cost reduction for the organization and supports sustainable environmental preservation.

/Chutipon Wangprom PRODUCTION DEPT.



Regular machinery maintenance contributes to energy efficiency and helps reduce electricity costs in industrial operations. Inadequate maintenance can lead to increased friction, heat buildup, or leakage, resulting in higher electrical current consumption by motors than under normal operating conditions.

/Kongpob Kobrat ENGINEERING DEPT.

Production processes are improved to minimize waste generation. Packaging materials and containers, such as wooden pallets and cardboard boxes, are reused within internal transportation processes. Waste is properly segregated to enable the recycling of materials (such as metal scraps, glass, and plastics).

/Akramanee Noiphet PRODUCTION DEPT.





**DUNLOP SRIXON SPORTS MANUFACTURING (THAILAND) CO., LTD.**

612/9 Moo 9, Kabinburi Industrial Zone, Tumbon Nongki,  
Amphur Kabinburi, Prachinburi 25110, Thailand  
Tel: +66(0)37-204868-76 Fax: +66(0)37-204872